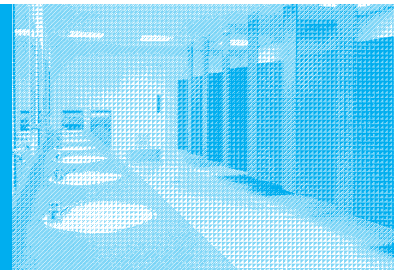




# BANISH™

## Mildew Stain Remover



### FEATURES

- Clings to vertical surfaces
- Chlorinated formulation
- Non-abrasive

### BENEFITS

- Enhances cleaning effectiveness
- Removes stains and whitens grout
- Safe on tile and fiberglass

### RECOMMENDED USES

Removes mold, mildew and soap scum from bathroom surfaces.

### SPECIFICATIONS

**Color** : Colorless to light yellow  
**Scent/Odor**: Chlorine  
**Character** : Clear, non-viscous liquid  
**Foam** : Moderate

**pH use dilution** : >12.5  
**Phosphorus content** : 0.0%  
**Approvals** : cRc



### IMPORTANT

Read and understand the label and Safety Data Sheet (SDS). These provide a description of hazards, precautions, personal protective equipment, first aid, 24 Hour Emergency lines, storage data and other safe handling information. The SDS is provided with each container shipped. It is also available on our website or from the distributor.

### PRODUCT DIRECTIONS

#### EQUIPMENT TO USE

Trigger sprayer, sponge or soft brush.

#### DIRECTIONS TO USE

**SHAKE BEFORE USE:** Spray this product on mildew stains in grout and watch them disappear. Recommended contact time is 1 to 2 minutes. Removes mildew build-up without scrubbing. Great for removing mildew build-up around shower stall lining. Allow a two minute contact time. Spray on and let stand. Wipe off completely. Rinsing is optional. Do not use on aluminum.

### PACKAGING

This product is available in 12/1 quart cases (065584).