

# Installation Instruction

## Remote Switch

This instruction explains how to wire the remote switch to your dispenser.

1. Cut the remote switch cable and strip enough of the insulation off to expose the red and black wires.
2. Strip the ends of the red and black wires.
3. Remove front cover of dispenser so that you can see the PCB.
4. You will see 3 wires connecting from the rocker switch to the PCB. They are brown, gray and green. See Figure 1.
5. Cut and strip the ends of the brown and gray wires. Leave the green wire as is.
6. Splice the remote switch black wire to the rocker switch gray wires, and the remote switch red wire to the rocker switch brown wires.
7. Secure connections with wire nuts.
8. Replace the dispenser front cover.
9. Press the remote switch button to operate.

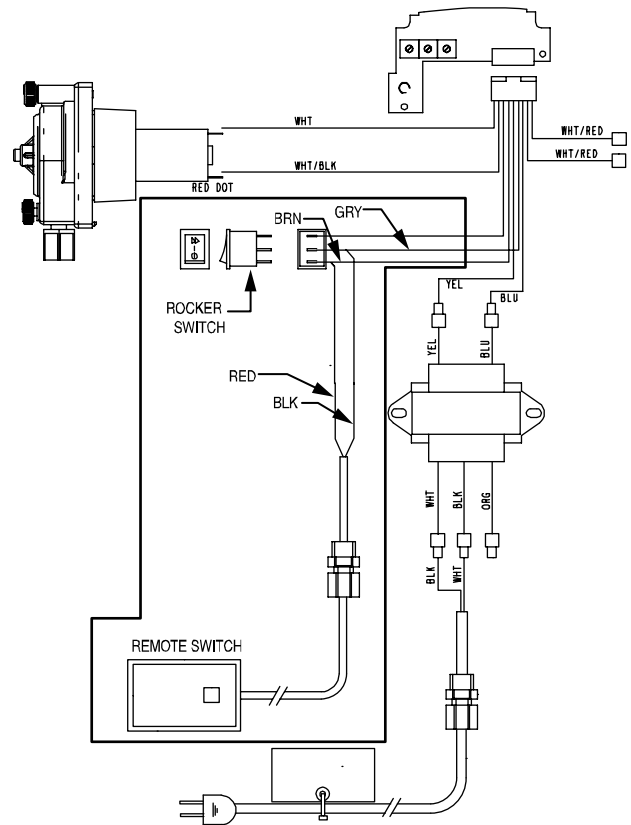


Figure 1. Remote switch/rocker switch wiring connections.